



# BO v17.4 Stage Release Notes

February 24, 2009

In anticipation of the forthcoming BO v17.4 release, FNRES is eager to announce new BO features that its valued customers will soon enjoy. These Stage Release Notes highlight the new “core enhancements” in the next release of BO and the benefits that these enhancements provide to FNRES customers. Core enhancements are the latest features that apply to most companies and their members.

The Production release of BO v17.4 is scheduled for the night of Tuesday, February 24, 2009. This means that on **Wednesday, February 25**, your Websites will reflect the changes described in this document (except where noted).

Release Notes contains:

- I. **PRODUCT ENHANCEMENT DESCRIPTIONS** – New features that you and your Website visitors can see, use, and enjoy!
- II. **INTEGRATED SCREEN SHOTS** – Browser captures that illustrate many of the enhancements in this BO release.

---

*Disclaimer: This is an advance edition of the BO v17.4 Release Notes. Issues may arise prior to the release of BO v17.4 that could affect the final edition of the BO v17.4 Release Notes.*



## PRODUCT ENHANCEMENTS

### ***City and Zip Boundaries on Map Search\****

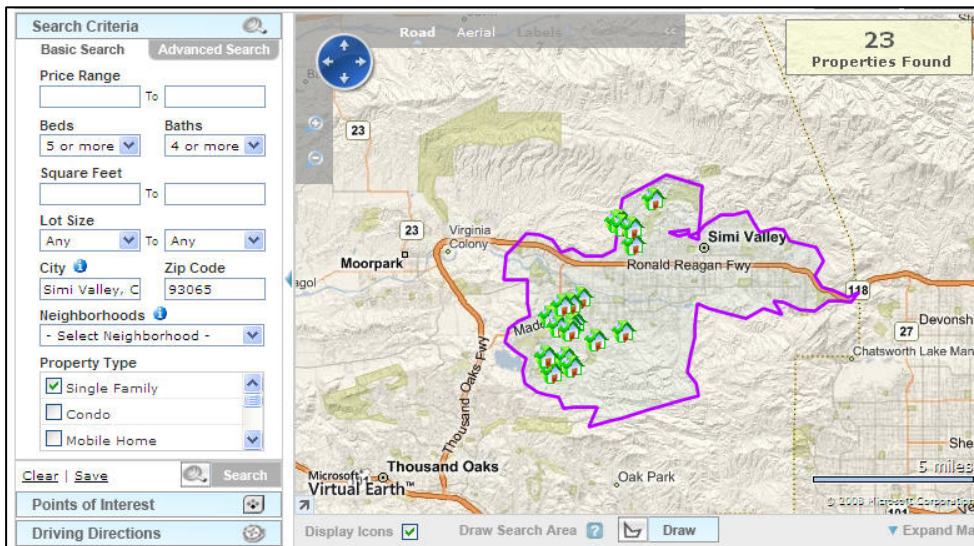
---

FNRES is excited to announce an exciting enhancement to the map search:

- Users will now see boundaries drawn on the map when they enter a city and/or a zip code as one of their search criteria. If both city and zip code are entered, the zip code boundary will be drawn

Key Benefits:

- ✓ Enhanced consumer experience



\* Will not be available until 2/26/09 in Stage.

### ***Multiple MLS Office and Agent ID's for Same MLS\****

---

BO v17.4 also makes available:

- Support for multiple office and agent ID's in one MLS  
*Enter multiple IDs separated by commas in the MLS ID input field in the MLS Memberships section of the Office Edit page*

Key Benefits:

- ✓ System can now associate all listings belonging to an office or agent



### Office - Edit

**General Info**

Office Name\*   
Internal Office Code   
Office Type   
Office Address  
Address 1\*   
Address 2   
City\*  State IL Zip\*   
County   
Office Main Phone\*   
Office Toll Free Phone   
Office Fax   
Office Email\*   
Office Manager

Office Logo/Photo  
(Displayed on Office search results only.)

**MLS Memberships**

Add New MLS    
**MLS Name**  **Membership ID**  ←  
CRISNET: Crisnet

Notes: To remove a membership, simply blank out the Membership ID and save the page. After saving, memberships will be ordered alphabetically.

\* Will not be available with initial Stage build, but will be made available some time during the Stage period.